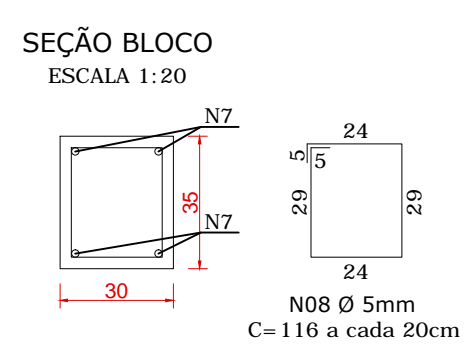


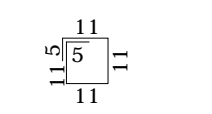
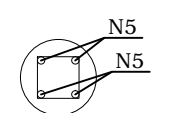


Diagrama de corte longitudinal de una columna de 25 cm de diámetro. El diagrama muestra la columna con sus refuerzos: armadura longitudinal (4 N1 Ø 8 - C=300), viga baldrame, alvenaria de embasamiento y estribo a cada 25 cm. Las dimensiones indicadas son 100 cm para la altura de la columna, 25 cm para el espesor de la alvenaria y 25 cm para el diámetro de la columna.

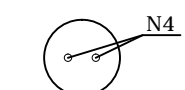
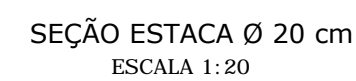
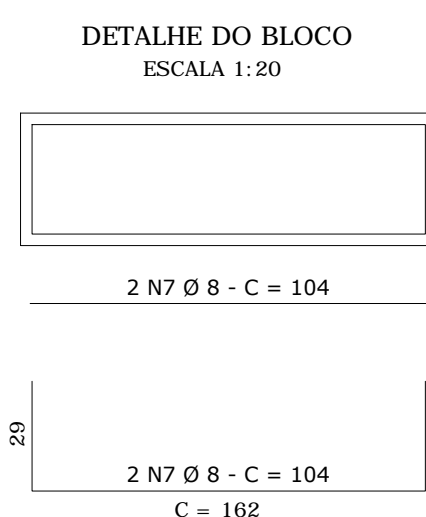
Corte longitudinal estaca Ø 25 mm



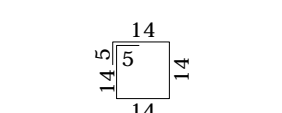
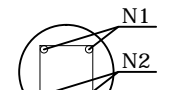
SEÇÃO ESTACA Ø20
DOS BLOCOS
ESCALA 1:20



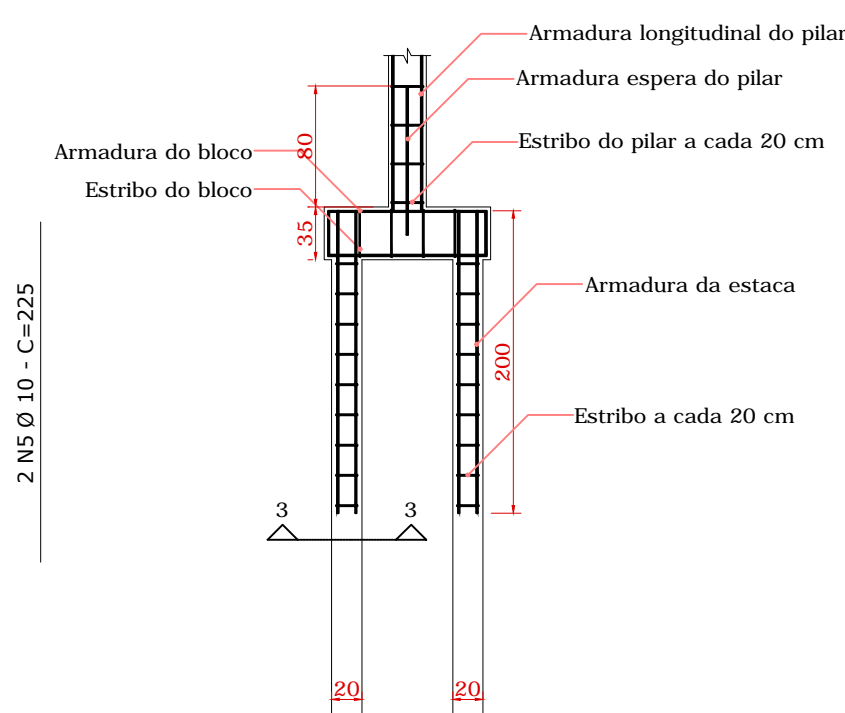
10 N06 Ø 5mm - C=54
S = 20 cm



SEÇÃO ESTACA Ø25
ESCALA 1:20

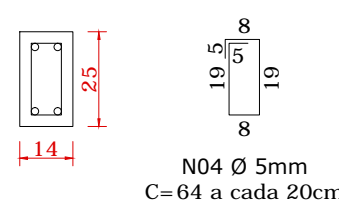


10 N03 Ø 6,3mm - C=66
S = 20 cm

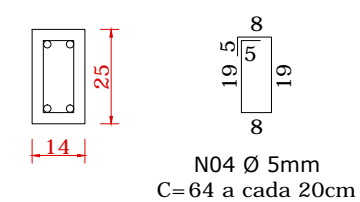


Corte longitudinal blocos

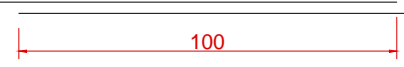
SEÇÃO PILARES
ESCALA 1:20



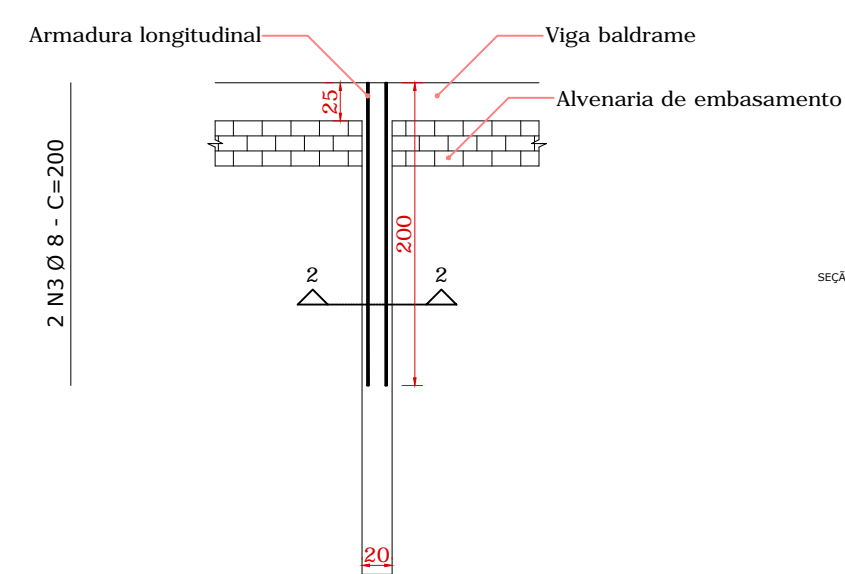
SEÇÃO VIGA BALDRAME
ESCALA 1:20



Área de traspasse nas vigas e baldrame



Ancoragem das vigas e baldrames



Corte estaca Ø 20 mm



REFORMA E AMPLIAÇÃO DO TERMINAL URBANO DE CONTENDA

01/02

PROJETO ESTRUTURAL

PROPRIETÁRIO:

Prefeitura Municipal de Contenda - PR
 Prefeito Carlos Eugênio Stabach

AUTOR DO PROJETO:

Eng. Civil Ovídio Luiz Druszc
CREA-PR 19.236/D

RESPONSÁVEL TÉCNICO:

Eng. Civil Ovídio Luiz Druszc
CREA-PR 19.236/D

DATA

JULHO/2020

DESENHO
DAIANA PRISCILA
TERMINAL

End.: Av. João Franco n.º 400
Centro - Contenda/PR
telefones= (041) 3625 1212 ; 99171268